



# HYBRID FLOOR CATALOGUE



# TABLE OF CONTENTS

<b>01</b> INTRODUCTION	<b>08</b> CASE STUDY	<b>15</b> CASE STUDY	<b>22</b> WARRANTY
<b>02</b> PRODUCT OVERVIEW	<b>09</b> MAINTENANCE GUIDE	<b>16</b> CASE STUDY	<b>23</b> CASE STUDY
<b>03</b> PRODUCT FEATURES	<b>10</b> MAINTENANCE GUIDE	<b>17</b> WARRANTY	<b>24</b> CASE STUDY
<b>04</b> DESIGNER COLOURS	<b>11</b> MAINTENANCE GUIDE	<b>18</b> WARRANTY	
<b>05</b> PRODUCT OVERVIEW	<b>12</b> MAINTENANCE GUIDE	<b>19</b> WARRANTY	
<b>06</b> PRODUCT OVERVIEW	<b>13</b> MAINTENANCE GUIDE	<b>20</b> WARRANTY	
<b>07</b> CASE STUDY	<b>14</b> MAINTENANCE GUIDE	<b>21</b> CASE STUDY	



## What LUXO Floors Is About

At LUXO Floors, we care about keeping your home beautiful and making sure you always feel proud of the floors you've chosen. Putting our customers first is our main priority, so we strive to produce high quality flooring that is also affordable. We have developed a range of products to ensure everyone can benefit from attractive floors - all with the personalised touch and unique design that comes from shopping with us. We understand that having sleek and sophisticated floors in the home adds style, value and comfort, so we do everything possible to make this a reality for our clients. With Luxo Floors, you too can transform your house with flooring.

## Our Mission

Our mission is to support our customers on their journey with the best quality products and value.



# Hybrid Floors

Hybrid flooring is the latest technology and combines the best of both worlds- vinyl and laminate. It's not only extremely attractive to look at, but also highly durable and low-maintenance. With our colour options, you can easily find a hybrid floor that perfectly matches your decorating scheme and adds unique charm to your home. Additionally Hybrid Floors are not affected by moisture, making it easy to clean and suitable in wet areas. Unlike natural timber floors, hybrid flooring doesn't require extensive maintenance and is much more affordable than timber floors!

## Product Features

The top layer of our Hybrid Floors are beautifully designed with a decorative layer that matches and mimics the elegant textures and natural grains of timber. Our 6.5h Hybrid Floors come with an acoustic backing underneath the core, which helps dampen sound when walked upon.

With our innovative limestone core, the floors are made to be durable, stable and will last a lifetime when taken care of. Plus, with regular cleaning, you can keep them looking as good as new for years to come!



Scratch  
Resistant



Easy to  
Clean



Authentic  
Knots and  
Grains



Excellent  
Fade  
Resistant



Naturally  
Hypoallergenic



### **FREE SAMPLES FAST!**

To aid you in the decision process, select 4 samples and it will be supplied free of charge.

Simply order online at:  
[www.luxofloors.com.au](http://www.luxofloors.com.au)

Phone before midday for some-day postage.



## Designer Colours

At 15 Designer Colours, our goal is to help make your home the place that you've always dreamed of. Our range of designer colours are made to suit any home, no matter the style. Whether you're looking for modern or classic, vibrant or subtle, our wide selection of designer colours can help you bring your vision to life. We understand that each space is unique and deserves special attention.

We believe in creating beautiful spaces that reflect your individual style and personality. Let us help you make your house into your home.

NEW  
EDITION



MODERN GREY

Wide Plank Pattern  
Matte Finish  
Micro Bevelled Edges  
UV Coated  
Click System  
Slip Resistant

Thickness 6.5mm  
Width 230mm  
Length 1500mm



WOODEN OAK

Wide Plank Pattern  
Matte Finish  
Micro Bevelled Edges  
UV Coated  
Click System  
Slip Resistant

Thickness 6.5mm  
Width 230mm  
Length 1500mm



SPOTTED GUM

Wide Plank Pattern  
Matte Finish  
Micro Bevelled Edges  
UV Coated  
Click System  
Slip Resistant

Thickness 6.5mm  
Width 230mm  
Length 1500mm



ROYAL BLACKBUT

Wide Plank Pattern  
Matte Finish  
Micro Bevelled Edges  
UV Coated  
Click System  
Slip Resistant

Thickness 6.5mm  
Width 230mm  
Length 1500mm



SUNKEN GREY

Wide Plank Pattern  
Matte Finish  
Micro Bevelled Edges  
UV Coated  
Click System  
Slip Resistant

Thickness 6.5mm  
Width 230mm  
Length 1500mm



COASTAL BLACKBUTT

Wide Plank Pattern  
Matte Finish  
Micro Bevelled Edges  
UV Coated  
Click System  
Slip Resistant

Thickness 6.5mm  
Width 230mm  
Length 1500mm



OAT

Wide Plank Pattern  
Matte Finish  
Micro Bevelled Edges  
UV Coated  
Click System  
Slip Resistant

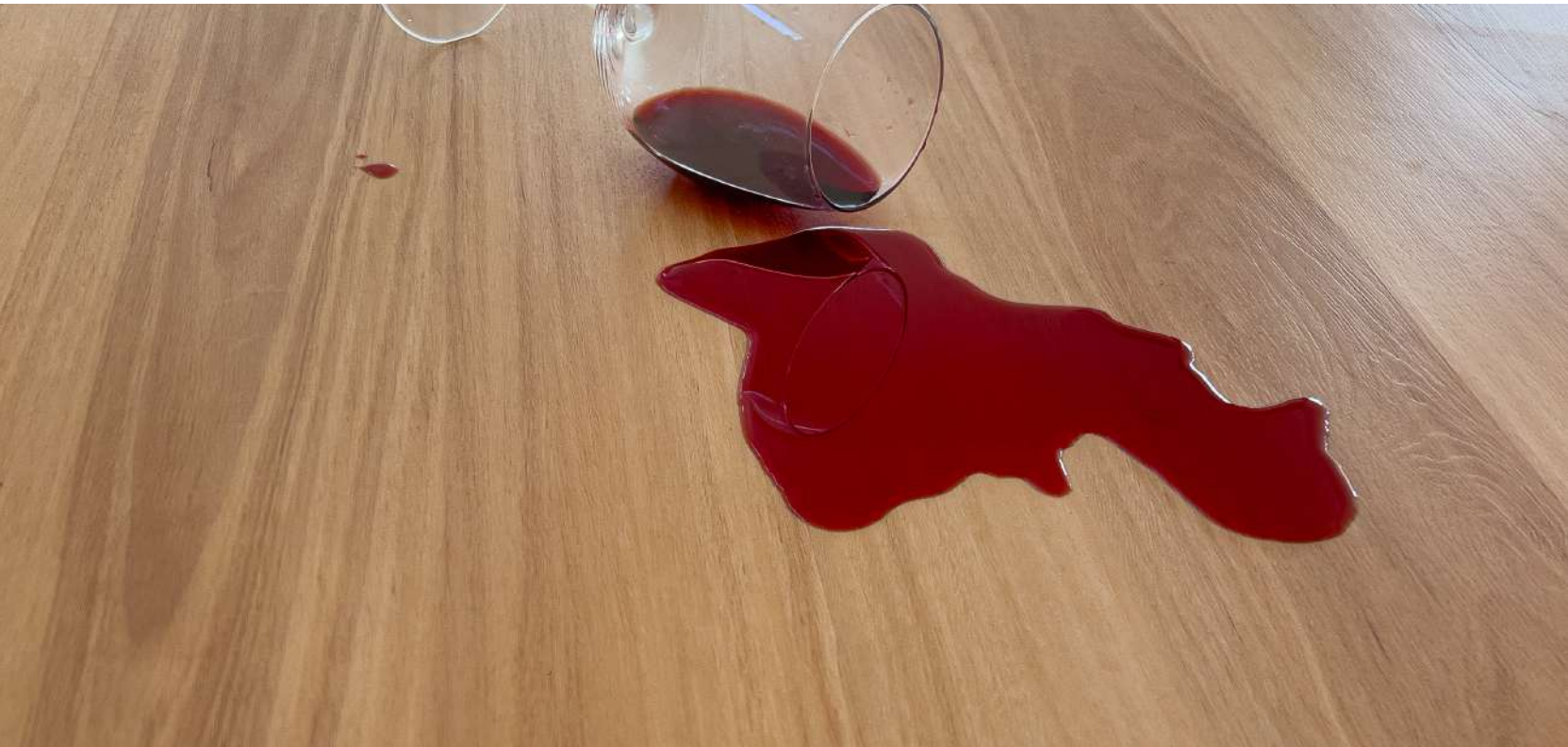
Thickness 6.5mm  
Width 230mm  
Length 1500mm



WHITE WASH

Wide Plank Pattern  
Matte Finish  
Micro Bevelled Edges  
UV Coated  
Click System  
Slip Resistant

Thickness 6.5mm  
Width 230mm  
Length 1500mm





BLONDE OAK

Wide Plank Pattern  
Matte Finish  
Micro Bevelled Edges  
UV Coated  
Click System  
Slip Resistant

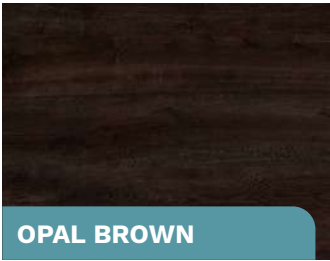
Thickness 6.5mm  
Width 230mm  
Length 1500mm



NATURAL OAK

Wide Plank Pattern  
Matte Finish  
Micro Bevelled Edges  
UV Coated  
Click System  
Slip Resistant

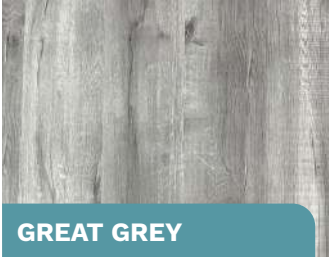
Thickness 6.5mm  
Width 230mm  
Length 1500mm



OPAL BROWN

Wide Plank Pattern  
Matte Finish  
Micro Bevelled Edges  
UV Coated  
Click System  
Slip Resistant

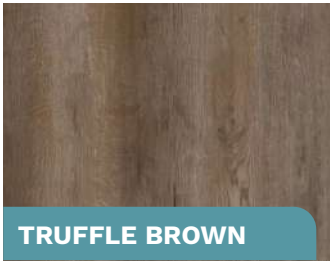
Thickness 6.5mm  
Width 230mm  
Length 1500mm



GREAT GREY

Wide Plank Pattern  
Matte Finish  
Micro Bevelled Edges  
UV Coated  
Click System  
Slip Resistant

Thickness 6.5mm  
Width 230mm  
Length 1500mm



TRUFFLE BROWN

Wide Plank Pattern  
Matte Finish  
Micro Bevelled Edges  
UV Coated  
Click System  
Slip Resistant

Thickness 6.5mm  
Width 230mm  
Length 1500mm



WHITE OAK

Wide Plank Pattern  
Matte Finish  
Micro Bevelled Edges  
UV Coated  
Click System  
Slip Resistant

Thickness 6.5mm  
Width 230mm  
Length 1500mm



CHESTNUT

Wide Plank Pattern  
Matte Finish  
Micro Bevelled Edges  
UV Coated  
Click System  
Slip Resistant

Thickness 6.5mm  
Width 230mm  
Length 1500mm







# CONSUMER & MAINTENANCE GUIDE

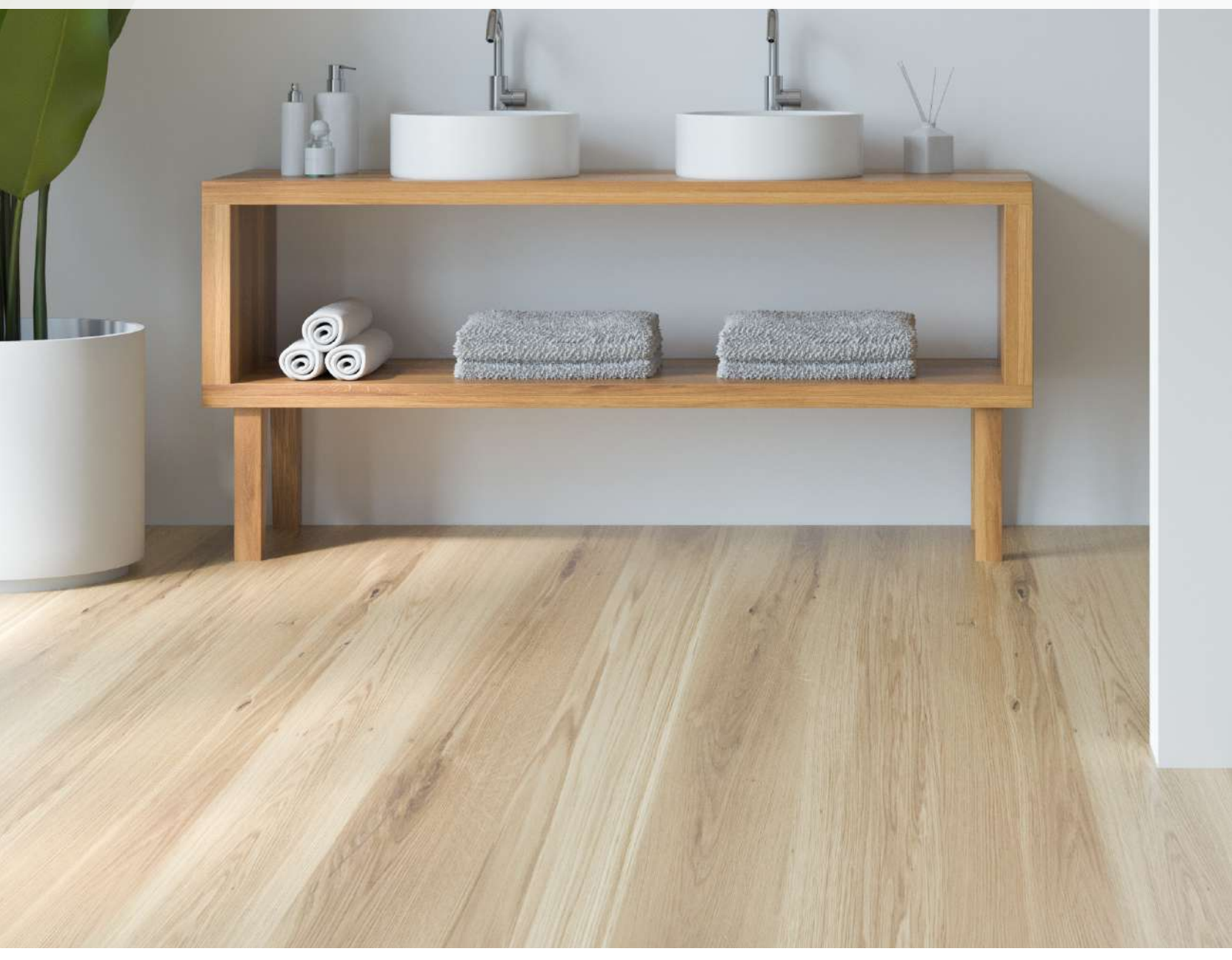
# Hybrid Floor

## 1 What is a Hybrid Floor

Hybrid flooring is the perfect choice for any home or commercial space. It offers a range of benefits, such as increased durability and water-resistance, great style options, easy installation and maintenance requirements, and affordability. The construction of hybrid flooring makes it more resistant to scratches and dents than other types of floorings. Furthermore, its water-resistance means that it is suitable for wet areas such as bathrooms and kitchens.

## 2 In addition, hybrid flooring offers a wide range of colors, patterns, textures, and finishes to choose from. Installing hybrid flooring also requires minimal effort and time compared to other options. This makes it an ideal choice for busy households or commercial spaces.

Overall, hybrid flooring is an excellent choice for any interior space due to its beautiful appearance, water-resistant nature, enhanced durability and easy installation process. With so many advantages and style options available, it's easy to see why hybrid flooring has become a popular choice for many homeowners and businesses alike.





## Hybrid Floor Installation

Hybrid floors are generally installed with the floating floors method where the flooring is often clipped together or glued at T&G board edges, but will not be glued to the sub-floor. Such floors have a naturally drummy sound throughout due to many factors such as expansion and contraction of the boards, expansion and contraction of the subfloor (concrete, plywood and etc). It is important for consumers to realise that drummy sounds often do not constitute a problem with the floor and with normal walking are often not noticeable. Drummy sounds should be assessed when the consumers notice a break in the click system or there is a consistent noise in the same area.



# Hybrid Floor Maintenance

- 1** You can immediately walk on your new hybrid floors after installation. It is allowed to use a vacuum cleaner with soft edges and soft wheels on your hybrid floor.
- 2** For general cleaning and maintenance we recommend the using a spray mop with washable microfibre pad. This should be used as per the enclosed instructions within the kit. The use of other cleaning products, sealants, polishers or agents may lead to residue build ups and can damage your floor. These residues can harbour dirt and marks leaving your floor looking dirty. Always remove spilled liquids from the floor immediately.

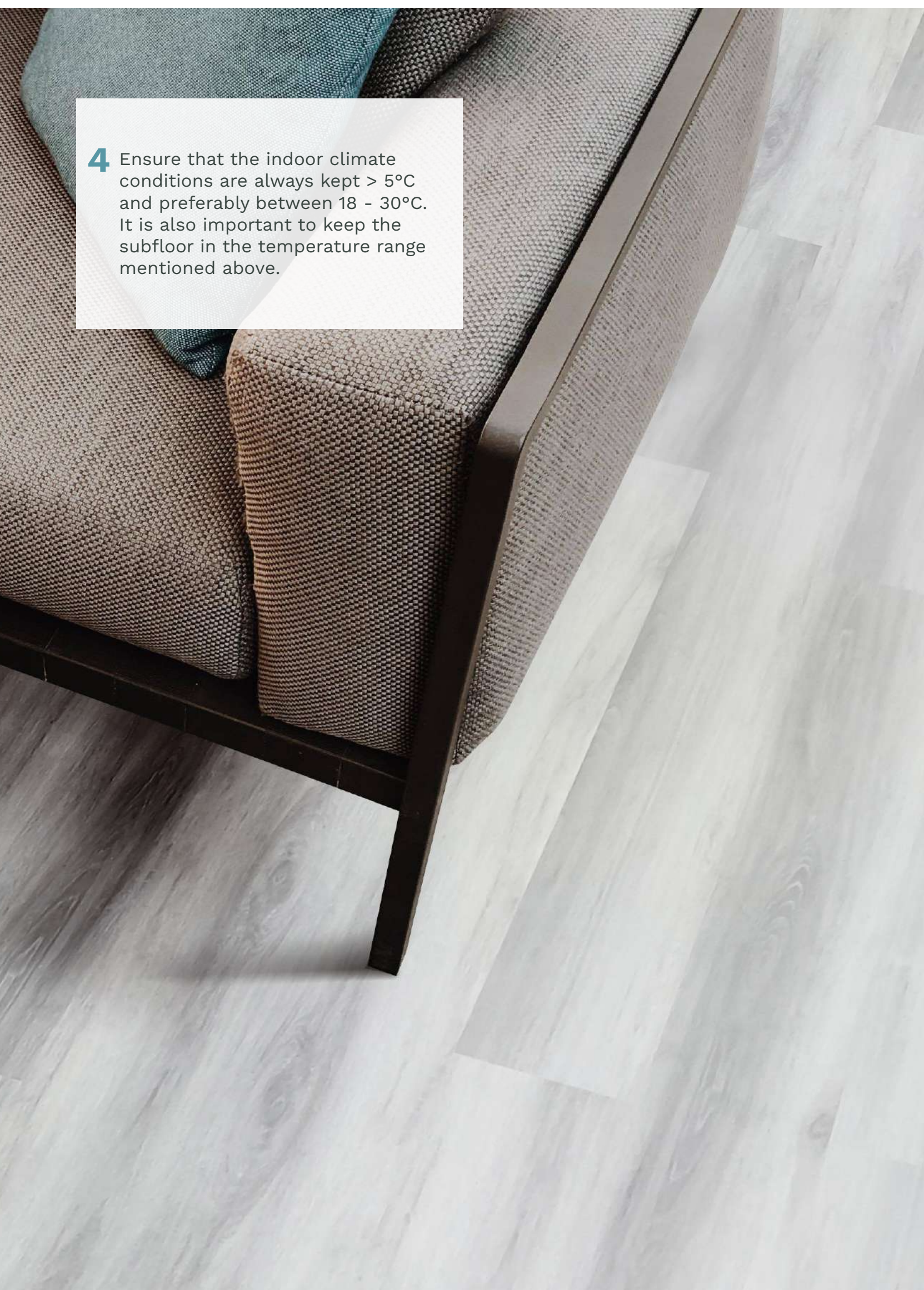
**3** Never drag heavy items or furniture over the floor, but lift them up. Make sure furniture legs have a large floor surface and are provided with non-staining floor protectors. The taller and/or wider the furniture feet are, the better the weight distribution on the floor will be, and the less chance there is to damage the floor. Place non-rubber backed mats at all outside entrances to prevent dirt, grit and soil from being transferred onto your floor.

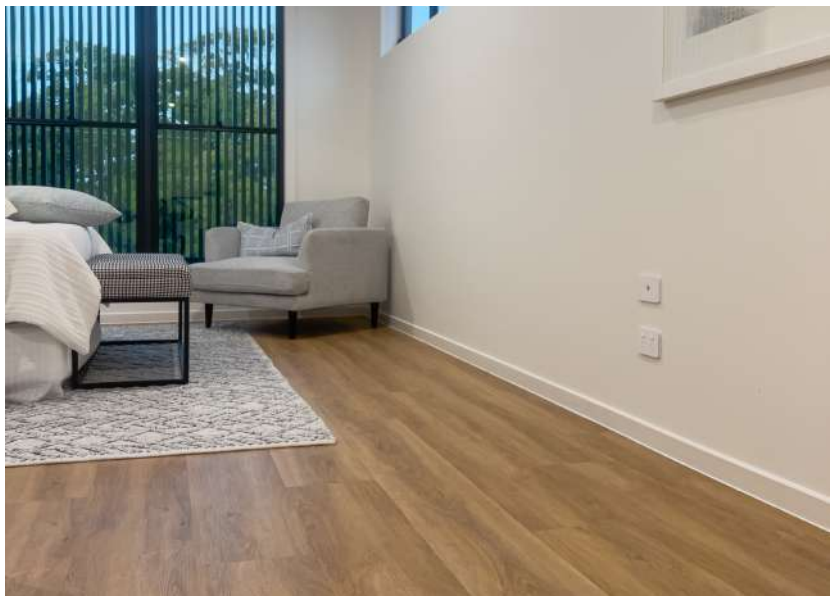
This will reduce damage, the maintenance requirement and extend the life of your floor. Please note that prolonged contact with some rubber types can cause a permanent stain.

Do not allow cigarettes, matches or other very hot items to contact the floor as this may cause permanent damage.

Do not drag sharp toys, high heels, or any other sharp objects throughout the floors.

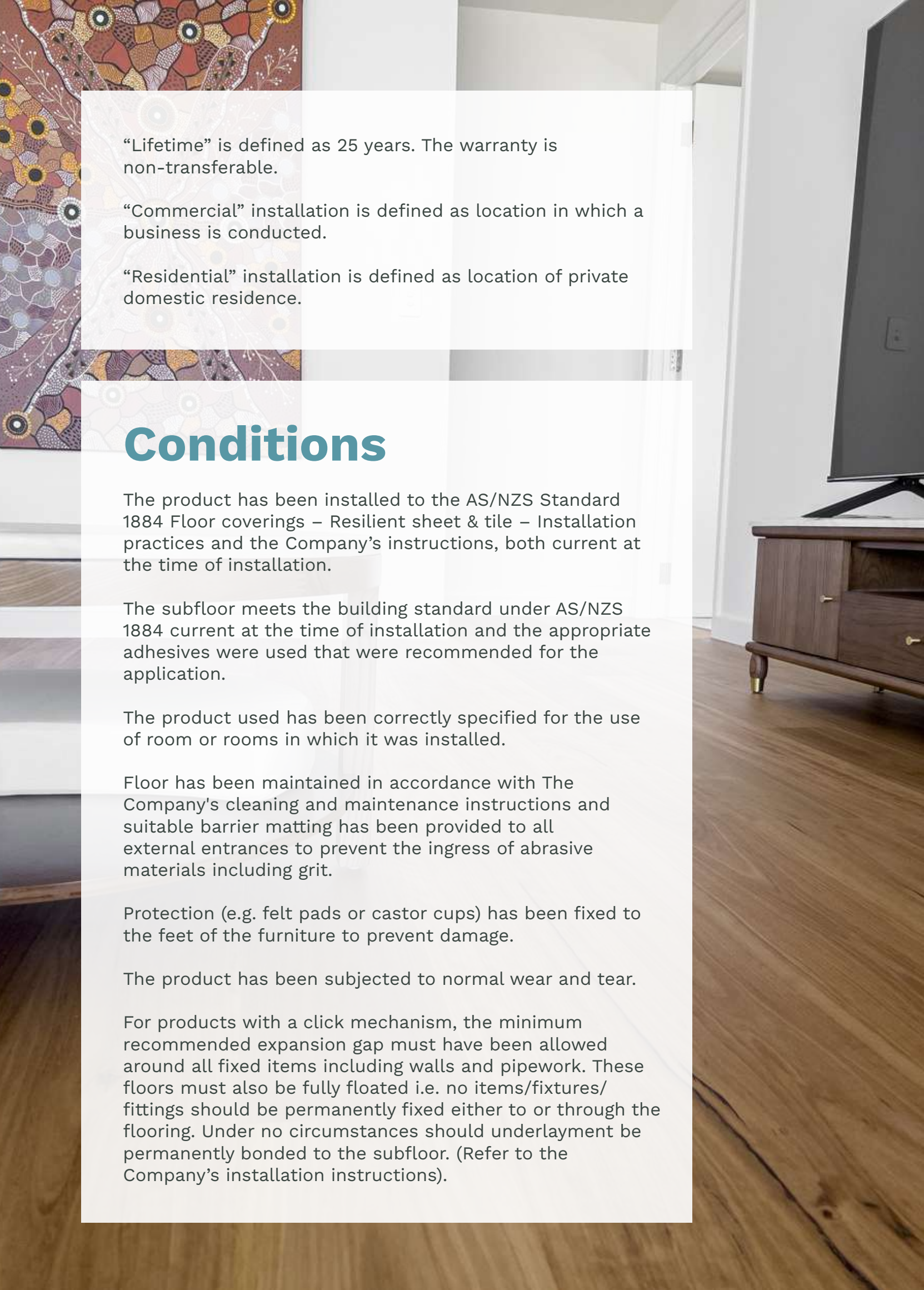


- 
- 4** Ensure that the indoor climate conditions are always kept  $> 5^{\circ}\text{C}$  and preferably between  $18 - 30^{\circ}\text{C}$ . It is also important to keep the subfloor in the temperature range mentioned above.





**WARRANTY**



“Lifetime” is defined as 25 years. The warranty is non-transferable.

“Commercial” installation is defined as location in which a business is conducted.

“Residential” installation is defined as location of private domestic residence.

## Conditions

The product has been installed to the AS/NZS Standard 1884 Floor coverings – Resilient sheet & tile – Installation practices and the Company’s instructions, both current at the time of installation.

The subfloor meets the building standard under AS/NZS 1884 current at the time of installation and the appropriate adhesives were used that were recommended for the application.

The product used has been correctly specified for the use of room or rooms in which it was installed.

Floor has been maintained in accordance with The Company’s cleaning and maintenance instructions and suitable barrier matting has been provided to all external entrances to prevent the ingress of abrasive materials including grit.

Protection (e.g. felt pads or castor cups) has been fixed to the feet of the furniture to prevent damage.

The product has been subjected to normal wear and tear.

For products with a click mechanism, the minimum recommended expansion gap must have been allowed around all fixed items including walls and pipework. These floors must also be fully floated i.e. no items/fixtures/fittings should be permanently fixed either to or through the flooring. Under no circumstances should underlayment be permanently bonded to the subfloor. (Refer to the Company’s installation instructions).

# Australian Consumer Law Update 2012

6.5h is provided with limited performance warranties that cannot be excluded under Australian Consumer Law. Entitlements include a replacement or a refund for what is termed as a major failure and for agreed reasonably assessed associated costs. Entitlements also allow for the goods to be replaced if the product fails to meet an agreed acceptable quality and that quality does not constitute a major failure.

## 6.5h: Commercial

Used in Commercial premises, 6.5h offers the following product warranties against product wear- out and manufacturing defects:

6.5h 10-years commercial heavy duty

Used in Residential premises, the Company offers a lifetime (Lifetime warranty is defined as 25 years) product warranty against product wear-out and manufacturing defects.

## 6.5h: Lifetime Structural Warranty

6.5h warrants its hybrid flooring to be free from defects in material, assembly, lamination, and workmanship for life. (Lifetime warranty is defined as 25 years). Thus covering the structural integrity of the hybrid floors.

## If your floor fails to perform

If any part of your floor fails to perform in accordance with this warranty, then, in addition to any rights you have under the Australian Consumer Law, LUXO FLOORS will supply free of charge the following percentage (in quantity) of an order for replacement LUXO FLOORS floor of the same or comparable quality to replace the affected area of the floor through your original retailer or another retailer in your area nominated by LUXO FLOORS equivalent to:

Year in which the claim is made, calculated from the date of installation:

- 1. Years 1-5 100%
- 2. Years 6-8 75%
- 3. Years 9-12 50%
- 4. After 12 years 25%
- 5. After 20 years 10%

## What if your floors fail to perform?

You will be responsible to pay the retailer the balance of the flooring and the installation costs.

In relation to claims made under this warranty, LUXO FLOORS will only supply the flooring as set out above and you will be required to pay any other expenses incurred in connection with the claim. LUXO FLOORS will not reimburse or pay for your time associated with making the claim, installation costs, the cost of cleaning, repainting, expert advice, obtaining quotations, accommodation, moving or replacing furniture, equipment or fittings or the disposal of flooring or packaging (subject to any additional remedies you may have under the Australian Consumer Law).

# Warranty Exclusions

- Indentations, scratches, damage caused by negligence or accident, water ingress, insects, animals, highheeled or spiked shoes, urine and high traffic areas.
- Failure to follow the manufacturer's written floor installation instructions, including protecting the floor from moisture from the subfloor and other sources.
- Exposure to excessive heat, sunlight or improper humidity in the environment.
- Improper maintenance, insufficient protection or misuse.
- Where subfloor heating is used above 27 degrees.
- Improper alterations to the original manufactured product. Alterations or repairs to the manufacturer's original product will void any and all warranties.
- Changes in colour or appearance due to full or partial exposure to sunlight, weather, ageing or refinishing.
- Failure due to structural changes in the subfloor, settling of the building or an uneven subfloor that has not been adequately levelled (+/- 3mm over 1m). -  
Damage/growth/moisture gain from evaporative cooling.
- Failure to maintain adequate ventilation. Most commonly, this may result if areas of floor are closed off for extended periods of time causing excessive heat leading to moisture loss and damage to the floor

# Conditions

Floor has been maintained in accordance with The Company's cleaning and maintenance instructions and suitable barrier matting has been provided to all external entrances to prevent the ingress of abrasive materials including grit.

Protection (e.g. felt pads or castor cups) has been fixed to the feet of the furniture to prevent damage.

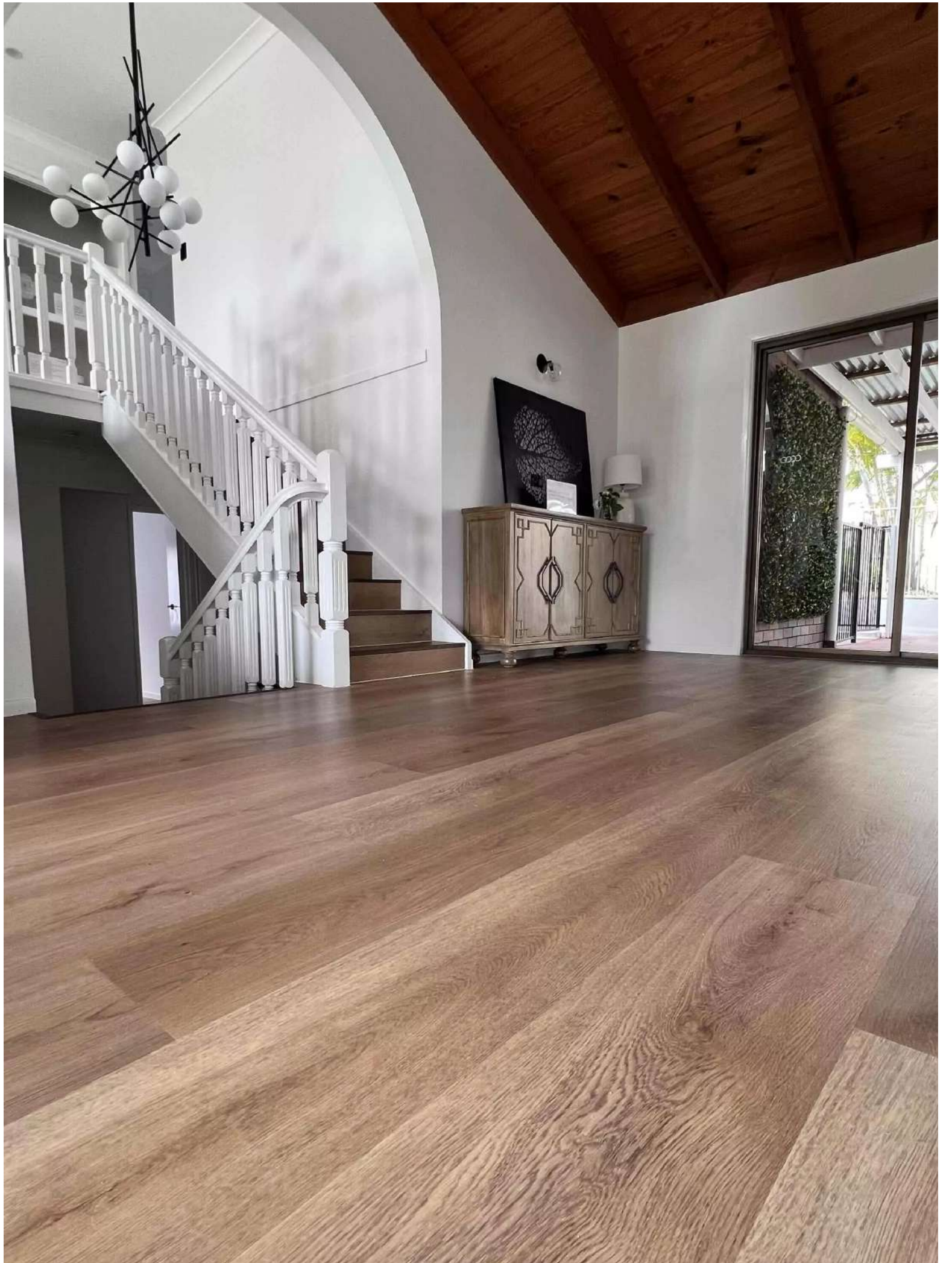
The product has been subjected to normal wear and tear.

These floors must also be fully floated i.e. no items/fixtures/fittings should be permanently fixed either to or through the flooring. Under no circumstances should underlayment be permanently bonded to the subfloor. (Refer to the Company's installation instructions).

## What will be done to correct the problem?

LUXO FLOORS (Distributor of 6.5h) will examine the product and decide, at its sole discretion, if it is covered under the guarantee. If it is covered, LUXO FLOORS will replace the product with a same or comparable product. If it is covered by this guarantee, LUXO FLOORS will not pay for the costs of installation, labour and travel for installation staff. If the product is no longer sold by LUXO FLOORS, LUXO FLOORS will provide an appropriate replacement. With LUXO FLOORS determining at its sole discretion, what constitutes an appropriate replacement through a comparing of price range or material range.

Email: [info@luxofloors.com.au](mailto:info@luxofloors.com.au)  
Website: [www.luxofloors.com.au](http://www.luxofloors.com.au)





**LUXO  
Floors**

Email: [info@luxofloors.com.au](mailto:info@luxofloors.com.au)  
Website: [www.luxofloors.com.au](http://www.luxofloors.com.au)